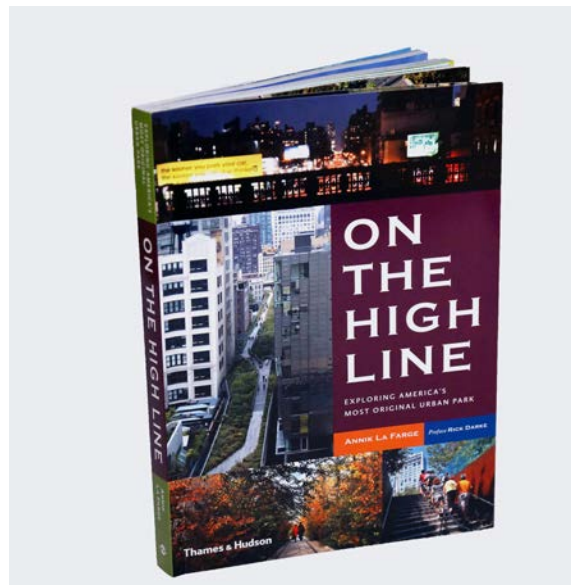


New York City's High Line Park is one of the world's most famous urban greenways. **Built on a former elevated freight railway that cuts through the Village, West Chelsea and Hell's Kitchen, it puts the city on display in a way that no other place can match. Why is the High Line such a stunning success?**

Annik La Farge, author of *On the High Line: Exploring America's Most Original Urban Park*, has been photographing, researching and writing about the High Line since the park opened in 2009, first on the blog *Livin' The High Line* and then in the book *On the High Line*.

Her popular, illustrated lectures get to the heart of that question, beginning in the early 19th century when the railroad first came to Manhattan and would utterly transform it....



The first illustrated guide to Manhattan's celebrated "Park in the Sky"

"Great...I thought there was not much I did not know about the High Line but I learned so much about the history and the neighborhood. People are going to love it."

-- Robert Hammond, co-founder, Friends of the High Line

"This book captures the experience of the High Line, setting it in historical and cultural context, and illustrating how a city can meld its industrial heritage into a vibrant new landscape that can be enjoyed by millions."

-- Piet Oudolf, landscape designer, the High Line

For more information about the book, please visit HighLineBook.com.

Annik La Farge

Author, Lecturer, Photographer

CONTACT: annik@anniklafarge.com

BLOG: LivinTheHighLine.com

WEBSITE: HighLineBook.com

Author bio at LivinTheHighLine.com/about



Photo © Rick Darke 2012

Lectures & Speaking Events

Annik La Farge gives custom lectures on the High Line, using hundreds of images -- archival photos and maps as well and contemporary photographs, including many rooftop and aerial shots -- to illustrate her talks.

She explains the story of the High Line, puts it in historical context, and describes other urban greenway projects around the world that have been inspired by its success.

Previous audiences have included school groups and teaching staffs; literary festivals; librarians; booksellers; publishers; journalists; and one of the nation's top arboretums.

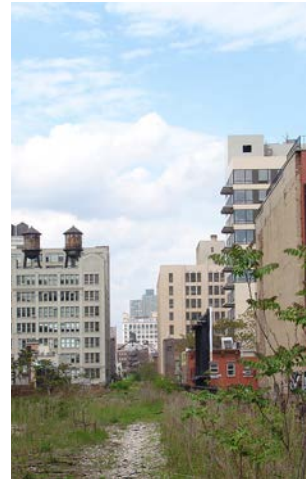
The West Side Cowboy

Why Tenth Avenue became known as "Death Avenue," and the role this played in Robert Moses' West Side Improvement Project, which included the elevated High Line.



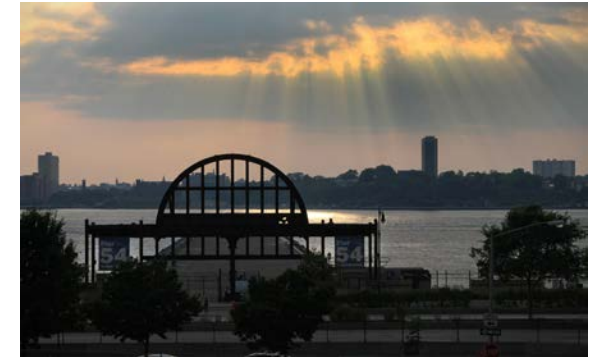
The Wild High Line

After the trains stopped running, the High Line transformed into a wild garden of unsurpassed beauty and extraordinary horticultural diversity.



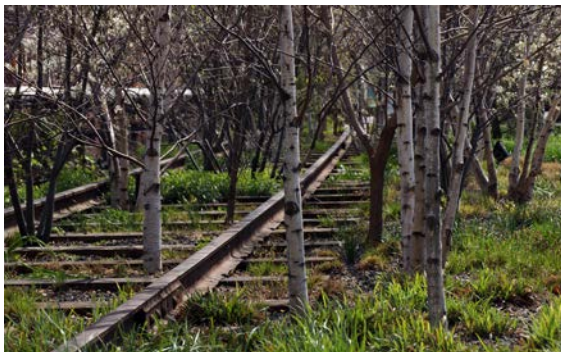
The Marriage of River & Rail

The High Line runs parallel to the Hudson River, New York's maritime artery. Learn about the fascinating system that connected the two through a network of barges, tugs, and railroad terminals.



The Gardens of the High Line

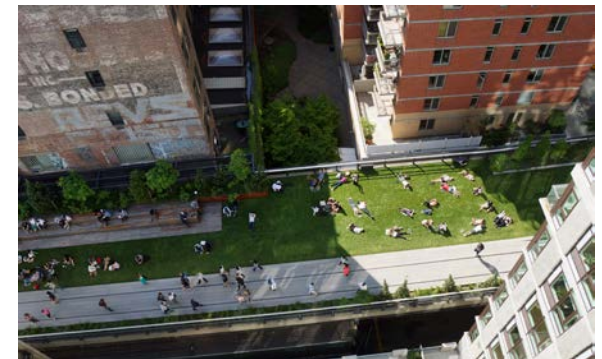
Dutch horticulturist Piet Oudolf conceived a variety of different garden types for the High Line, which would recall the wild plants and self-sown landscape that emerged after the railroad was abandoned.



Gansevoort Woodland



Chelsea Grassland



Lawn